

IFX ENERGY



Building Automation – Heating and Cooling

ISOFLUX<sup>®</sup>  
The ultrasonic meter

## ISOFLUX® E3: KEY FEATURES

IP68

3 protocols

Function "ONE"

R100 and R250

PN16 and PN25

Class 2

Different power sources

T90 and T130

### IFX E3 - FLEXIBLE & COMPACT



EN1434



#### HVAC & R



- Energy measurement and distribution
- Energy efficiency
- Custody Transfer
- Co and Tri-generation
- Hot and chilled water
- Data Center
- District heating
- Building Automation

#### Application

Designed for domestic and service sector applications, the IFX-E3 energy meter links the flexibility of the "ONE" function with the opportunity to have two protocols simultaneously.

Its precision features make it the perfect instrument for shopping malls, offices and light industries applications, in addition to the classic residential applications.

### ISOFLUX® PROTOCOLS AND CERTIFICATIONS

#### PROTOCOLS

BACnet

LoRaWAN®

M-Bus

Modbus

RF

PULSES

4-20mA

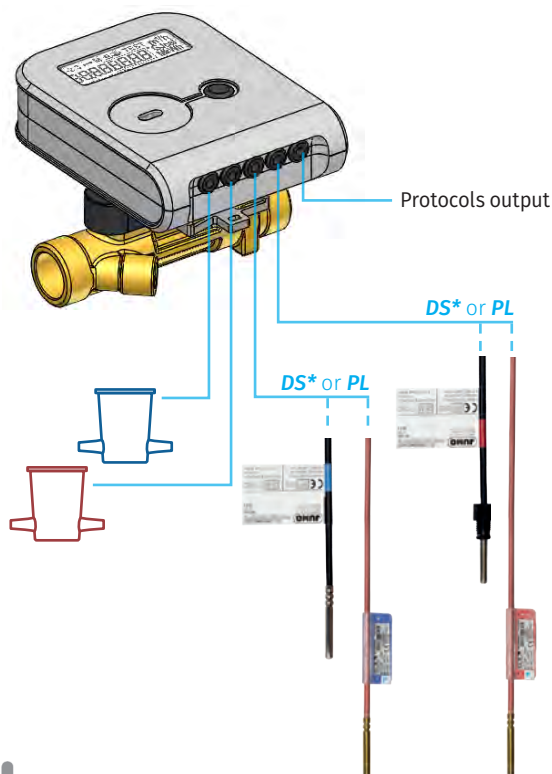
#### CERTIFICATIONS

MID  
MF004



## IFX E3 - THE EVOLUTION

### Connections and dedicated temperature probes



### “ONE” FUNCTION

The “ONE” (Optimized & Nimble Editing) function allows the modification of some metrological parameter even when the instrument is MID approved. This change must be done before the first liter of water has passed.

The editable parameters are:

- *Vector fluid measurement side*
- *Energy measure unit*
- *Activation and value of the input/output additional pulses*

#### TECHNICAL FEATURES

Power supply	12-24Vac/dc; 230Vac; Battery (1 or 2)
Class	2 as per EN1434
Protocols	Up to 3 simultaneously
Protection rate	IP65 (IP67 or IP68 optional)
Sizes	from 3/4" up to DN100
Qp values	From 0,6 m³/h up to 60 m³/h
Nominal pressure	PN16 or PN25
Connection	Treaded or flanged

### Memorization

The thermal energy meter IFX-E3 is equipped with an **internal memory** that allows the recording with **hourly** frequency (1480 values), **daily** frequency (1130 values) and **monthly** frequency (36 values) of the measured values for subsequence **processing**.

### Protocols

The presence of two slots for the protocols makes easy **instrument integration** with both existing and the new networks. The available wired protocols are **Mbus**, **Modbus** and **BACnet**, the wireless protocols are **WMbus** and **LoRaWan**.

### Pulses

**Two pulse outputs** are available under request and are settable through the “ONE” function. The two outputs can be transformed in two inputs.

### Nominal pressure

The heat meter is **PN16** as a standard and **PN25** as an option for all the available diameters.

## TEMPERATURE PROBES

### DS - for series 01, 03 and E3

Typically used for DN≤32, ball-valve needed.

#### TECHNICAL FEATURES

Class	B
Approval	MID MI004
Particularity	Pairing selection
Max cable length	10 m



Ball valve (1" and 1 1/2")



### PL - for series 01, 03 and E3

Used for DN>32, pockets are required.

#### TECHNICAL FEATURES

Class	B
Approval	MID MI004
Particularity	Pairing selection
Max cable length	10 m



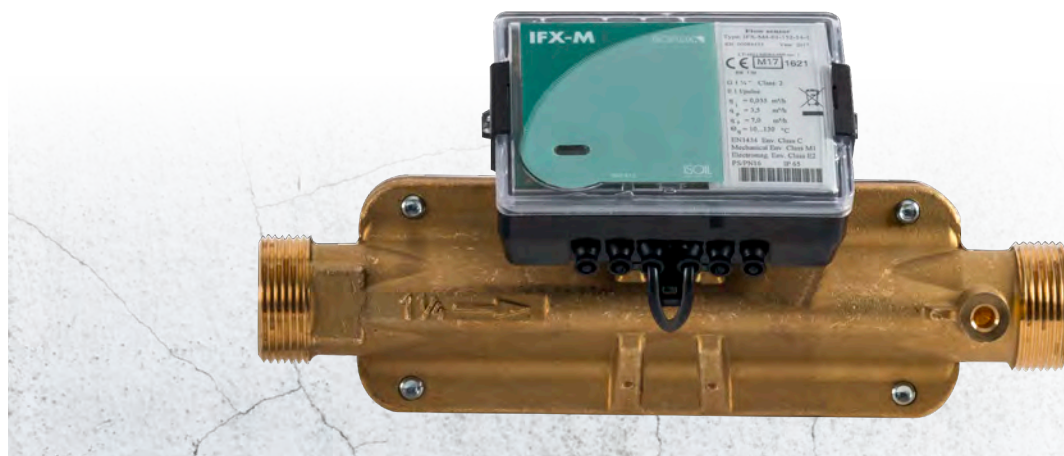
Pocket  
(85 mm - 120 mm - 210 mm)



# IFX 01 FLOW SENSOR



Class 2 - MI004



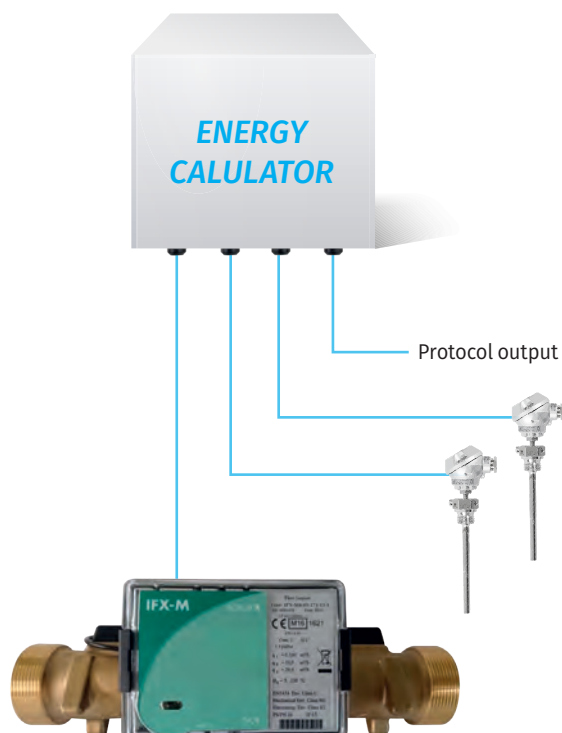
EN1434

MID  
MF004

## Application

The IFX-M4-01 ultrasonic flow sensors are developed as a Thermal Energy System component, in conformity to EN1434 and approved MI004 if required:

- The flow sensor satisfies the requirement of the 2014/32/EU;
- The flow sensor can be installed either vertically or horizontally and no straight diameters are required until DN50;
- The flow sensor can be connected to ISO<sup>NRG</sup> series (tech information in a separate brochure) or other compatible energy calculators.



## TECHINCAL FEATURES

Power supply	12-24Vac-dc, 230Vac, battery (1 or 2)
Classe	2 as for EN1434
Output	Burst pulses
Protection rate	IP65 (IP67 as option for the pipe)
Sizes	From 3/4" up to DN100
Qp values	From 0,6 m³/h up to 60 m³/h
Rangeability	R100 (R250 as option)
Nominal pressure	PN16 or PN25
Connection	Treaded or flanged

## TEMPERATURE PROBES

### PLH - for series 01

Head temperature probes, can be 2 or 4 wires connection.

## TECHINCAL FEATURES

Class	A
Approval	MID MI004
Particularity	Pairing selection
Pocket	Included



www.isoil.com

ISOIL INDUSTRIA SPA  
Cinisello Balsamo - Milan (Italy)  
Via Fratelli Gracchi, 27  
tel. +39 0266027.1 - fax +39 026123202  
sales@isoil.it

**ISOIL**  
INDUSTRIA  
The solutions that count